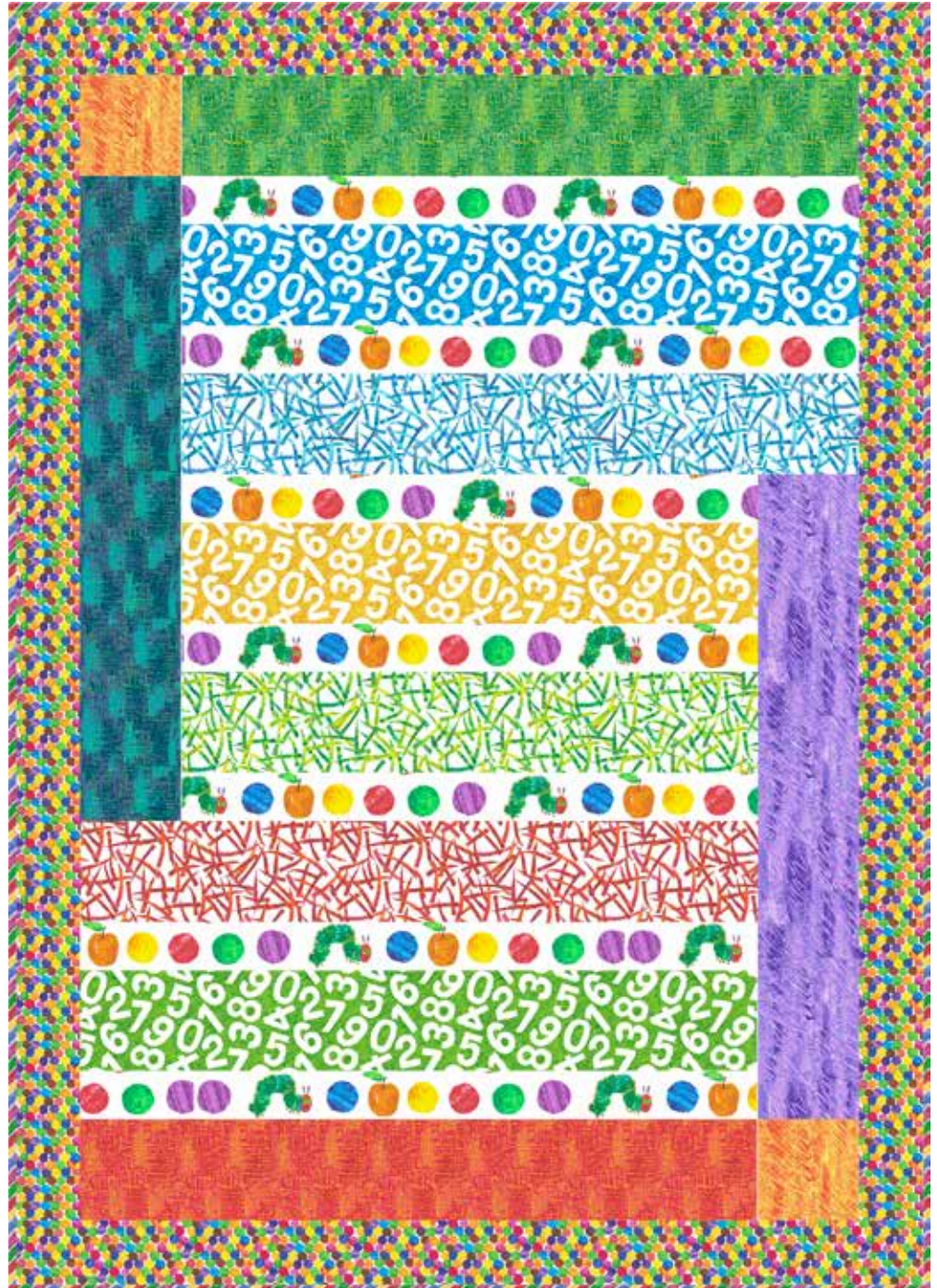
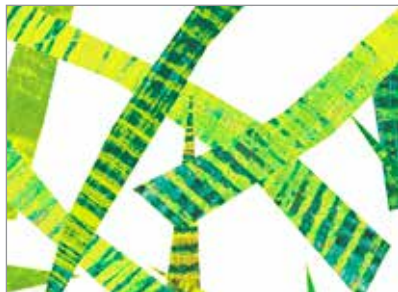


The Very Hungry Caterpillar

FABRICS BY ERIC CARLE, LLC



Inchin' Along Quilt Design:
Vanilla Latte Quilts

Quilt Size: 56½" x 79"

andoverfabrics.com

andover



makower uk
The Henley Studio

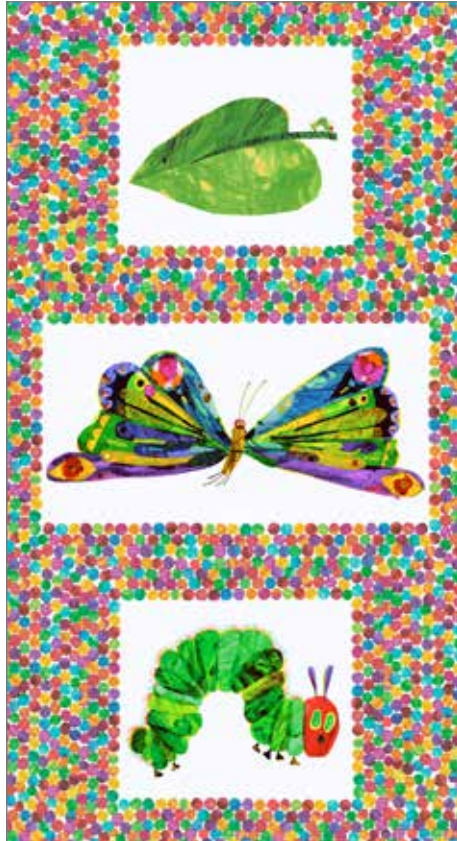
Free Pattern Download Available

1384 Broadway New York, NY 10018
Tel. (800) 223-5678 • andoverfabrics.com

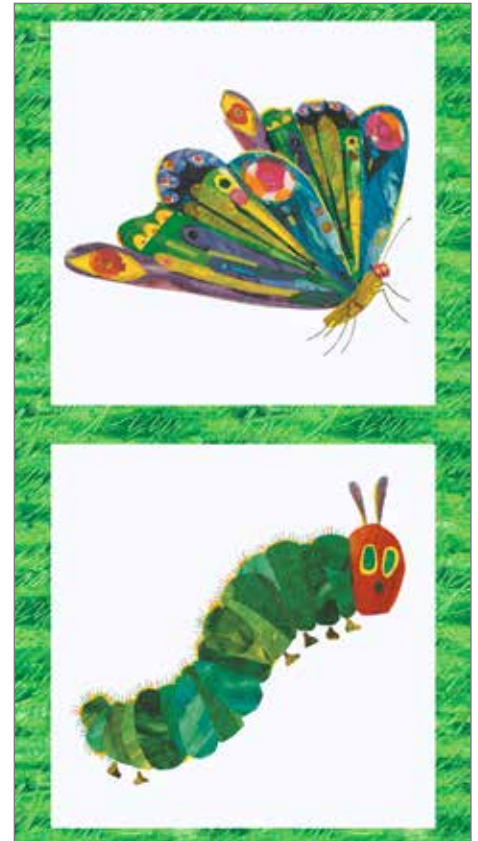
Revised 9/12/13



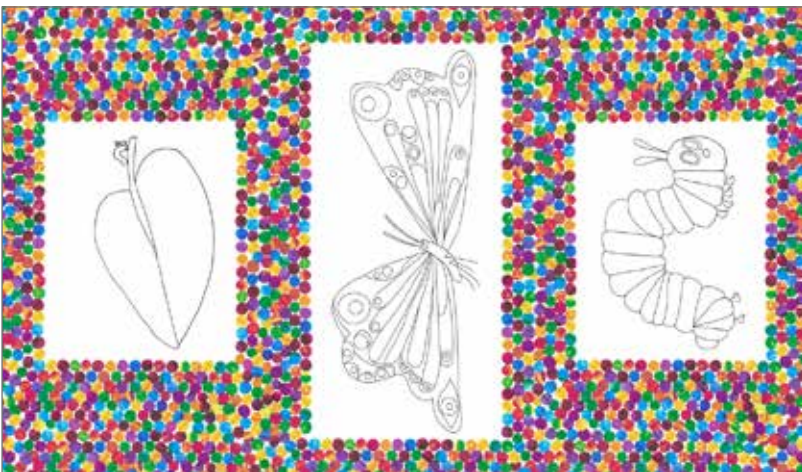
3472-M



3474-M



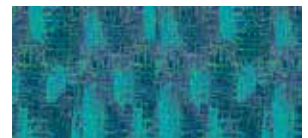
5280-M



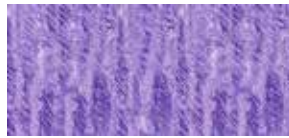
5626-M



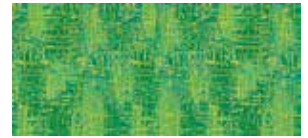
3476-G



3477-B ¼ yd



3476-P ¼ yd



3477-G ¼ yd



3476-Y Fat ⅛ yd



3477-R ¼ yd

The Very Hungry Caterpillar

FABRICS © ERIC CARLE, LLC

andover : makower uk
The Henley Studio

Revised 9/12/13



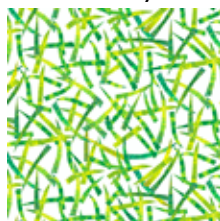
7232-X 1¼ yds



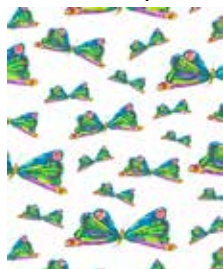
7233-X



7237-XB ¼ yd



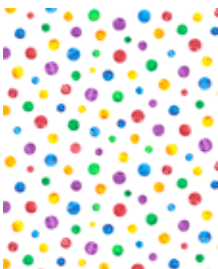
7237-XG ¼ yd



7234-X



7235-X



7236-X 3½ yds
(backing)



7237-XR ¼ yd

FABRIC	10 KITS	20 KITS	30 KITS
3474-M	2	3	3
7232-X	1	2	3
FROM EACH	1	1	1
3475-B	3475-G	3475-Y	3476-P
3476-Y	3477-B	3477-G	3477-R
7237-XB	7237-XG	7237-XR	

BACKING	10 KITS	20 KITS	30 KITS
7236-X	3	5	8

Yards needed for backing: **3½ YDS per kit**

Bolts needed to cut project kits.
15 yds = 1 bolt

Fabrics shown are 10% of actual size.

Fabrics used in quilt pattern are shown in black.



5281-M



5282-M



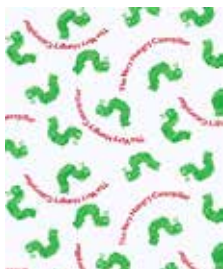
3475-B ¼ yd



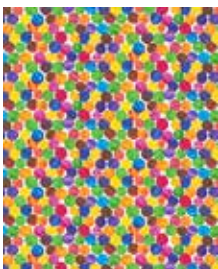
3475-G ¼ yd



5283-M



3473-G
Also available in
flannel: F3473-G



3474-M 1½ yds
(includes binding)
Also available in
flannel: F3474-M



3475-Y ¼ yd

The Very Hungry Caterpillar

FABRICS © ERIC CARLE, LLC

andover : makower uk
The Henley Studio

Revised 9/12/13